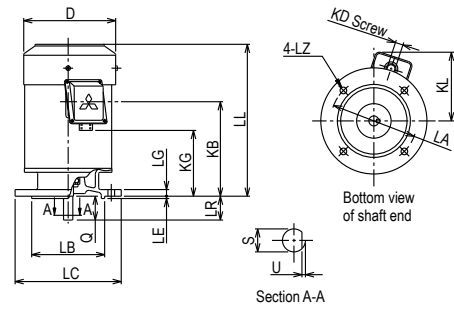




Outline Drawing



Specifications

Output Power HP (kW)	1/4 (0.2)
Phase	3 Phase
Pole	4 Pole
Frame Number	63M

Degrees of Protection	IP 55
Enclosure Construction	Totally-enclosed Fan-cooled
Thermal Class	Class F (155 °C)

Alignment	Vertical
Frame Material	Steel plate

Power Transmission	Direct-couple or Belt Driven
Direction of Rotation	Counterclockwise (CCW) viewed from shaft-end side

Connection Type	Terminal Block (6 Leads)
Coating Colour	Munsell N5.5 (Gray)
Conformed Standard	IEC 60034-1 & JEC-2137-2000

Voltage & Frequency	LT Type
	220/380~415V 50Hz 220/440V 60Hz

Motor Characteristics

Type	Hz	V	50% Load			75% Load			100% Load				Torque(%)		Is (A)	Inertia GD <sup>2</sup> (kg-m <sup>2</sup> )	
			(A)	Eff(%)	PF(%)	(A)	Eff(%)	PF(%)	(A)	Eff(%)	PF(%)	Speed (r/min)	Torque (kg-m)	Ts			Tm
LT	50	220	0.91	0.60	0.48	1.00	0.67	0.59	1.11	0.69	0.68	1430	0.140	330	257	5.11	0.0040
		380	0.53	0.60	0.48	0.58	0.67	0.59	0.64	0.69	0.68	1430	0.140	330	257	2.95	
		415	0.61	0.55	0.42	0.64	0.63	0.52	0.68	0.68	0.60	1440	0.140	399	309	3.27	
60	220	0.73	0.66	0.54	0.84	0.71	0.66	0.97	0.73	0.74	1730	0.110	284	232	4.56		
	440	0.50	0.58	0.46	0.53	0.65	0.56	0.59	0.69	0.65	1750	0.110	378	310	3.01		

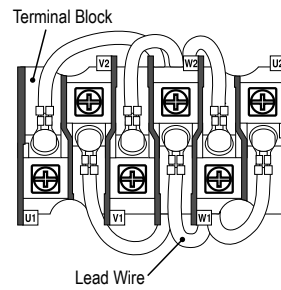
Dimensions (mm)

Flange Number	Motor							
	D	LA	LB	LC	LE	LG	LL	LZ
FF130	127	130	110 j6	160	3.5	10	208	10

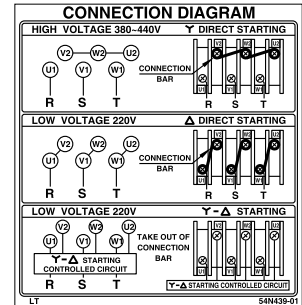
Terminal Box			Shaft End			
KD	KG	KL	LR	Q	S	U
PF 1/2	58	125	23	23	11 h6	1

Bearing No.		Approximated Weight (kg)	Approximated Packing Dimensions (LxWxH)	Gross Weight (kg)
Drive End	Opposite			
6201ZZ	6201ZZ	6.6	318 x 256 x 180	6.9

Connection & Connection Diagram



Connection



Connection Diagram

Circumstance Conditions

Ambient Temperature	-20 ~ +40°C
Ambient Humidity	95% RH or less
Operating Altitude	Less than 1,000m above sea level
Environment	No bursting / erosive gas or vapor